

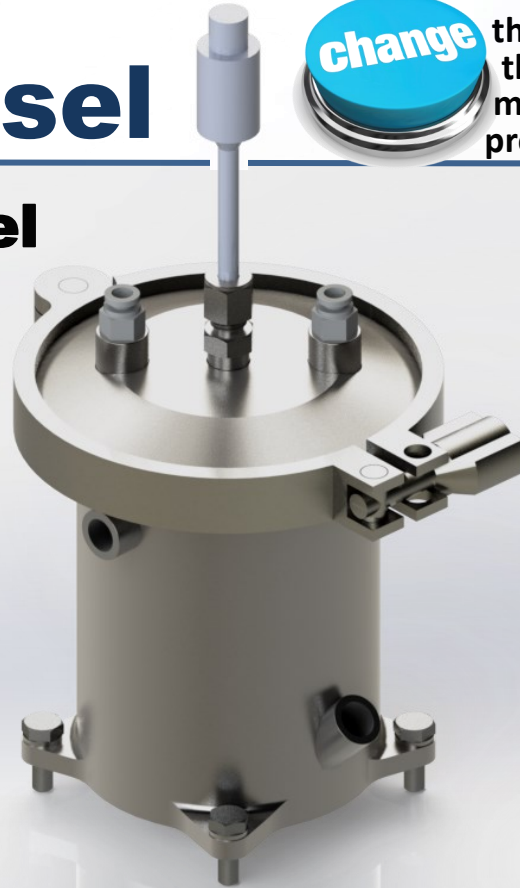


# Jacketed Vessel

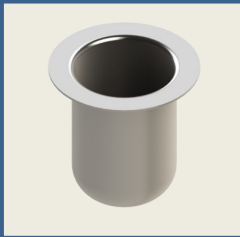


the way you think about mixing and processing

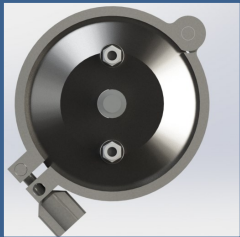
## 16 oz. Jacketed Vessel For Resodyn Acoustic Mixers' LabRAM™ II Family Of Products



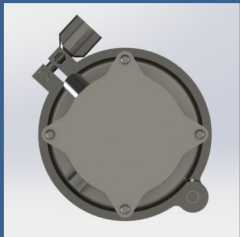
Vessel Insert Cut-away



Vessel Liner



Vessel Lid



Vessel Base

### Key Features

- Temperature control from 34° F cooling to 302° F heating (1°-150° C)
- Can improve mix quality
- Easy installation and operation
- Equipped with ports for vacuum
- Controlled through LabRAM II HMI
- Equipped with RTD for temperature monitoring
- Removable and replaceable mixing vessel liner

### Advantages:

- Maintain constant temperature of mixing material for improved results
- Automated control enables hands-free operation
- Apply vacuum and temperature measurements simultaneously
- Eliminate material movement with multiple capabilities on LabRAM II

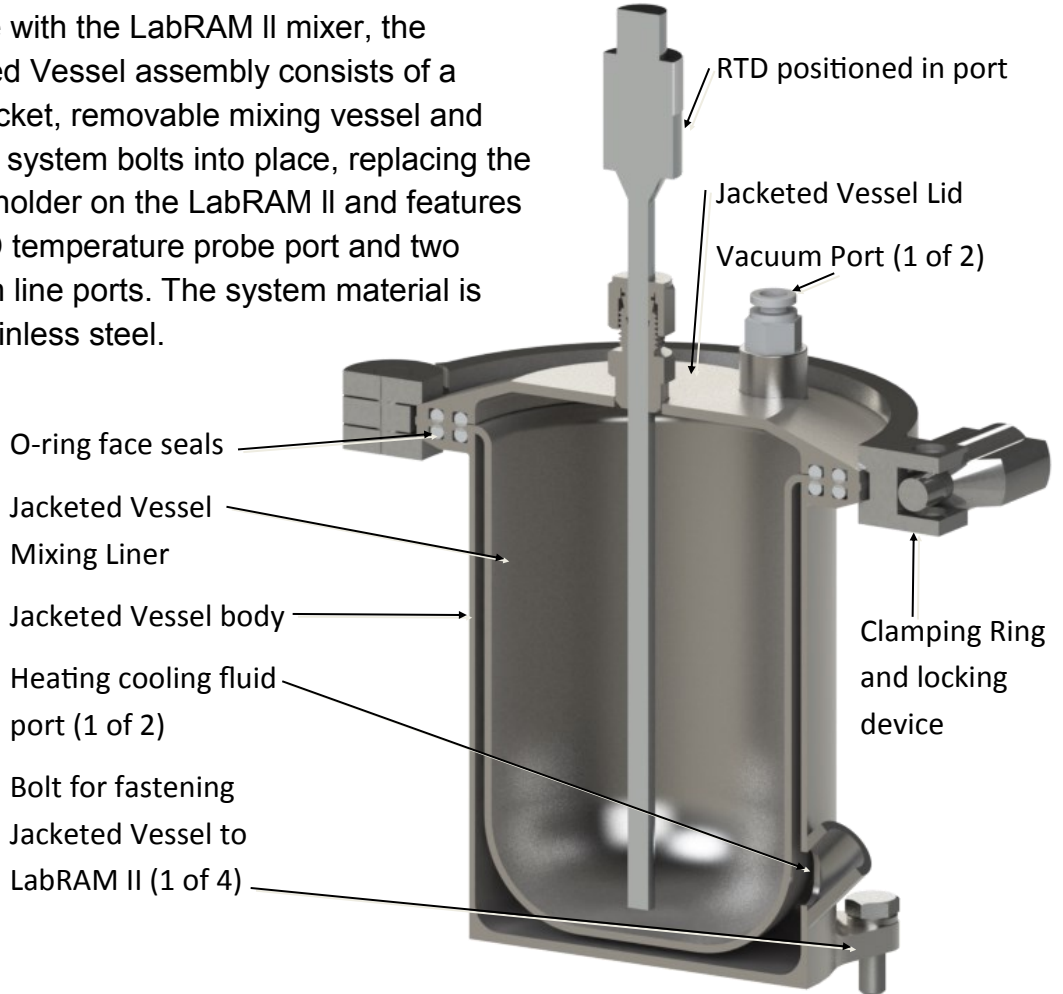
	Process Requirements	QTY	Alt. units
<b>Vessel</b>	Product vessel pressure	3.5 bar	50 psig
	Product temperature measurement	1 port	
	Product vacuum/pressure relief	2 port	
<b>Jacket</b>	Jacket cooling/heating	34° - 302° F	1° - 150° C
	Jacket pressure	3.5 bar	50 psig
<b>User Supplied Requirements</b>			
<b>System</b>	Heating system	Steam/Hot Fluid	
	Cooling system	Chilled Fluid	
	Process Instrumentation and Control	Gauges, valves, heat/cold header, stream trap	

**change** the way you think about mixing and processing

# Jacketed Vessel



For use with the LabRAM II mixer, the Jacketed Vessel assembly consists of a fixed jacket, removable mixing vessel and lid. The system bolts into place, replacing the vessel holder on the LabRAM II and features an RTD temperature probe port and two vacuum line ports. The system material is 316 stainless steel.



	Physical Specification	QTY
<b>Vessel</b>	Volume (product + headspace) 500 ml, 16 oz..	1
	Face seal: lid to vessel and vessel to jacket. Viton	2
<b>Lid</b>	1/4" Swagelok compression fittings for RTD and vacuum. 316 SS, RTD, PTFE ferrule, cable included	1
	1/4" instant tube fitting for hose routing to off-board vacuum. Valve included	2
<b>Jacket</b>	1/8" NPT female half couple for heat transfer media In - Out - Drain	2
<b>Assembly</b>	Lid to jacket mount: Sanitary clamp	1
	Braided SS hose to include service loop, connect outer ring to vessel. Inlet, outlet, pressure relief	3
	Jacket to LabRAM mount: Dog eared flange with 1/4" - 20 cap screws	4

Other Resodyn Acoustic Mixer Products



Processing Technology of Choice for Development, Processing Around the Globe

130 North Main Street, Suite 630  
Butte, MT USA 59701 (406) 497-5333  
info@ResodynMixers.com www.ResodynMixers.com